

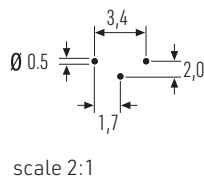
PRODUCT IMAGE



TECHNICAL DATA

- product description:** Decorative acoustic board for walls, ceilings and furniture construction.
- dimension:** 2.800 x 1.310 mm (raw)
2.768 x 1.280 mm (usable)
- perforation:** finest (1,7/2,0/0,5) (corresponds to formerly 1,8/1,8/0,5)
- core-board:** 19 mm MDF E1 (according table 8 EN 13986)
16/18 mm MDF E1 (B-s1, d0 according DIN EN 13501-1)
drilled | with hole-free areas
- surface:** veneer | CPL
- fire classification:** C-s2, d0 acc. DIN EN 13501-1 (in composite)
limited contribution to fire (others on request)
- edges:** industrial saw cut
- accessories:** mounting-rails (optional)

- hole diameter:** 0,5 mm
- hole center ↔ center:** 1,7 | 2,0 mm
60° offset
- open surface:** 5,77 %
- holes/m²:** 294.118



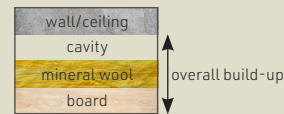
INFO

The perforation **finest** is **directional!**
When assembling, this must be taken into account when aligning the panel (even with plain decors).

PROVISIONAL NOTE:

This data sheet has been prepared to the best of our knowledge and belief. No liability can be assumed for printing and standard errors as well as errors. Due to (product) further development, there may be changes to the available data. The content of this data sheet should not be used as a legally binding basis.

SOUND ABSORPTION VALUES



overall build-up	50 mm	220 mm	420 mm
cavity (open)	-	150 mm	350 mm
mineral wool	30 mm	50 mm	50 mm
board thickness	20 mm	20 mm	20 mm
frequency [Hz]	α_s	α_s	α_s
100	0,11	0,40	0,51
125	0,34	0,48	0,61
160	0,23	0,85	0,76
200	0,35	0,75	0,75
250	0,46	0,99	0,84
315	0,70	0,91	0,81
400	0,87	0,67	0,84
500	0,95	0,85	0,83
630	1,08	0,95	0,94
800	1,08	0,93	0,99
1000	1,04	1,01	0,99
1250	1,01	0,98	0,98
1600	0,96	0,95	0,95
2000	0,88	0,91	0,95
2500	0,80	0,87	0,93
3150	0,78	0,82	0,90
4000	0,78	0,77	0,86
5000	0,67	0,70	0,82
NRC	0,85	0,95	0,90
SAA	0,85	0,95	0,90
α_w	0,80	0,90	0,95
absorber class	B	A	A

